

Year 5

Geography Knowledge Organiser

Unit of work:

Investigating Climate and Biomes

Links to other year groups:

Y2 Science Animals, Y3 Rainforests, Y4 Science Habitats & Adaptation, Y6 Science Evolution

Key Vocabulary:

Weather: the temperature and amount of precipitation at any one time

Precipitation: rain, snow, hail

Climate: the pattern of weather over a period of at least 30 years

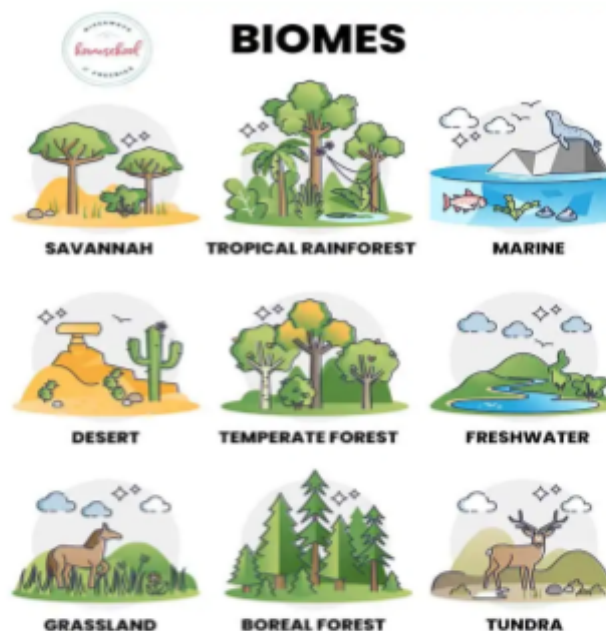
Climate zones: areas of the world with similar climates (these may be in different parts of the world)

Biome: a large region of the world that has a similar climate, with similar vegetation and animals that have adapted to live in that climate

Greenhouse effect: gases like carbon dioxide are trapped in the atmosphere and stop heat escaping, causing the world to warm up

Climate change: a change in global or regional climate patterns

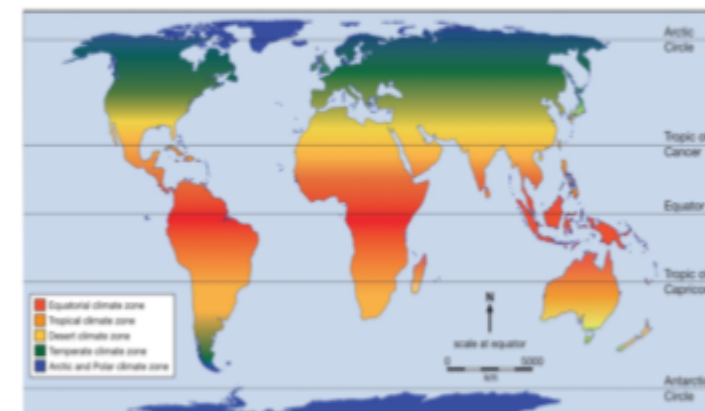
Areas around the Equator are hot because the sun's rays are directly overhead



How are biomes threatened by human activity?

1. Tundra d. The burning of fossil fuels causes the earth's temperature to rise and therefore melts the ice.
2. Savanna a. The clearing of vegetation, as well as using the land to farm cattle damages the soil and turns it into a desert.
3. Taiga e. Humans live in this biome and cut down lots of trees in order to build homes.
4. Rainforest c. Logging and deforestation cause huge amounts of damage to this vulnerable biome.
5. Desert b. Driving off-road cars kills off vegetation, which in turn affects the animals.

Climate Zones - equatorial, tropical, hot desert, temperate, polar



Biomes



Sequence of Lessons	
	Brief summary of lesson content
Lesson 1	Introducing climate - why is it hotter in some places than others?
Lesson 2	What is a climate zone? How does the climate differ around the world?
Lesson 3	Reading climate graphs
Lesson 4	What is a biome?
Lesson 5	Investigating how climates, plants and animals are connected (interdependent)
Lesson 6	Investigating the effect of climate change to the life in different biomes

