

<b>Year 6 – Summer</b>	<b>Art Knowledge Organiser</b>
Unit of work:	Mountains
Links to other year groups: Y1 pop art, Y3 volcanoes, Y9 pop art	

### Key Vocabulary & Skills:

**Shading** - The use of marking made within outlines to suggest three-dimensionality, shadow, or degrees of light and dark. Using techniques such as cross hatching, shading and blending, line can make an object appear realistic.

**Skyline** - This is an outline (as of buildings or a mountain range) against the background of the sky.

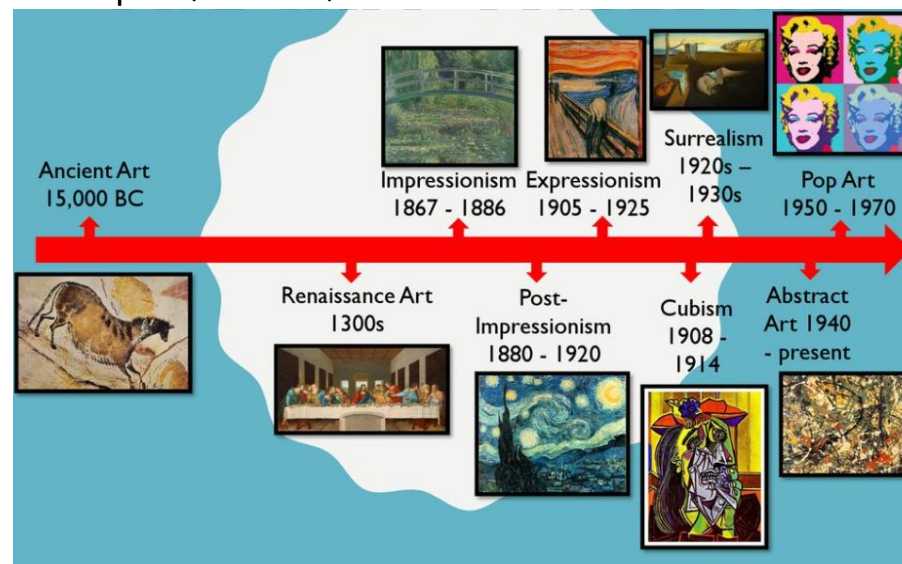
**Charcoal** - Black crumbly drawing material made of carbon

**Line** - The connection between two points. It can vary in length and size and direction. Line is used to sketch, draw and outline, they help you develop the composition of your artwork.

**Hardness** - How much lead will be left on the paper depends on the hardness of the pencil and how much pressure an artist puts onto it.

**Mark making** - There are a variety of lines you can use, these are called mark making. Artists use these to create texture, reflection, shadows and show the direction of light. They also help to show movement and perspective.

### Timeline – Pop Art (1950-1970)

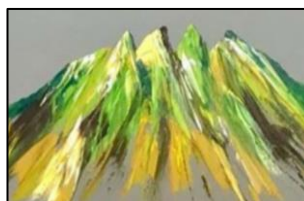


### Important works of art:

'Marilyn Monroe'  
by Andy Warhol



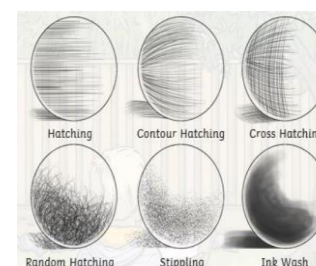
Scafell Pike Ridge on Grey  
by Peter Nelsonn



Campbell's Soup Cans  
by Andy Warhol



### Mark-making:



### Key Artists/Movements:

**Pop art** is a style of art based on simple, bold images of everyday items, such as soup cans, painted in bright colors. Pop artists created pictures of consumer product labels and packaging, photos of celebrities, comic strips, and animals.

**Andy Warhol (1928 – 1987)** Andy grew up in Pennsylvania USA. He studied art at college and won prizes for his work, being known for his unique style. However, Andy wanted to do more with his art. In 1961, Andy came up with the concept of using mass-produced commercial goods in his art. He called it Pop Art. He would use commercial images and famous portraits reproducing them over and over but using different colours and effects in each picture.

Despite having made a lot of money off of his art, Andy can also be credited with bringing art to the masses. He would mass produce prints of his art so it was affordable to everyone.

Sequence of Lessons	
	Brief summary of lesson content
Lesson 1	Introduction to PopArt and mountain skylines
Lesson 2	How to shade in pencil - pencil drawings of chosen mountain
Lesson 3	Shading with coloured pencil
Lesson 4	Study of north west artist, Peter Nelson, and using paint in the same style
Lesson 5	How to use charcoal sticks
Lesson 6	Evaluate of skills and media used